



1954 S. TROY



**LIVE/WORK
SPACE
AVAILABLE!**

FOR RENT | INDUSTRIAL

THREE-STORY LIGHT INDUSTRIAL WAREHOUSE BUILDING FOR MANUFACTURING, WELDING, CUSTOM CABINETS/COUNTERS, STORAGE, ARTISANS AND MANY OTHER USES! NEXT DOOR TO CTA PINK LINE KEDZIE STATION AND MINUTES FROM THE EISENHOWER EXPRESSWAY!

LOCATION | 1954 S. TROY AVE. CHICAGO, IL 60647

SPACE AVAILABLE | 4,889 - 6,093 SF

MONTHLY RENT | STARTING AS LOW AS \$2,037

CEILING HEIGHT | 12 FT.

ZONING | C1-2



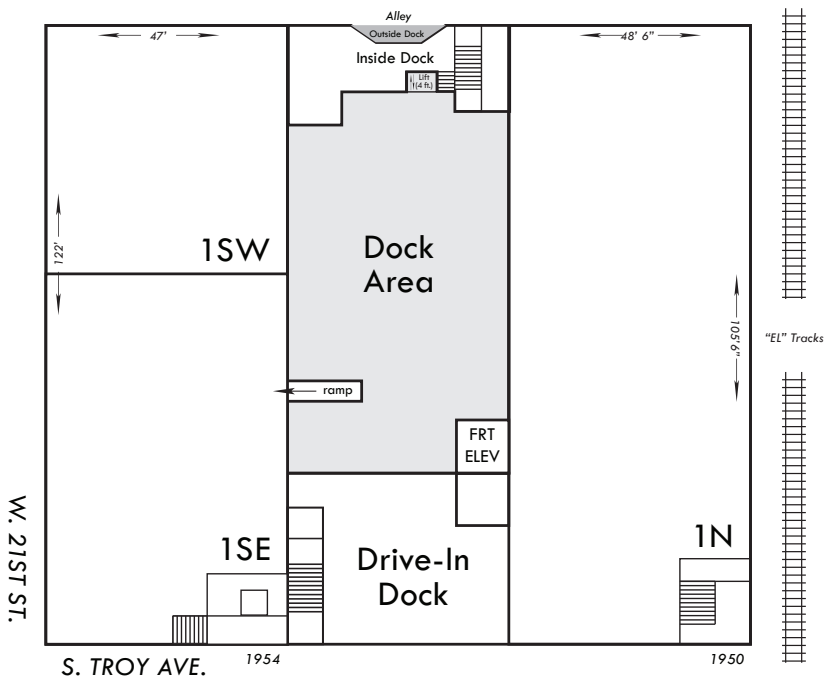
CONTACT

TERRI COX 312-337-1001 xt. 2028 tcox@matanky.com

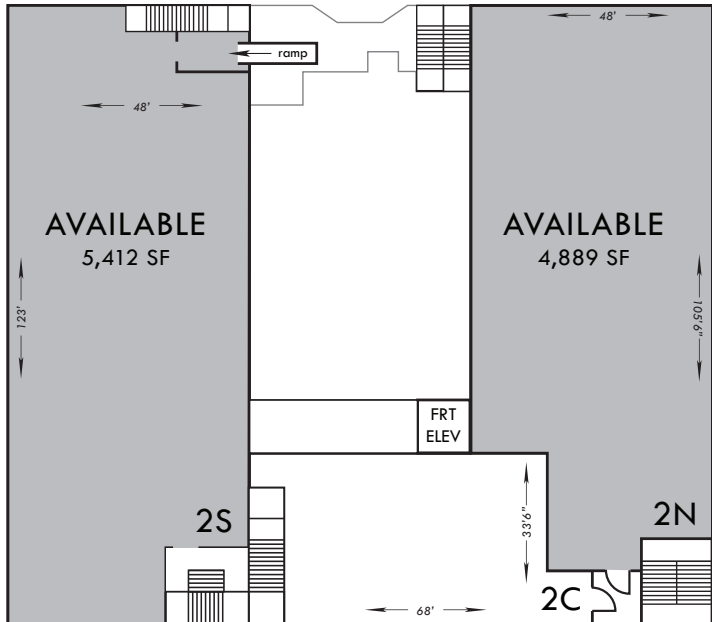
1954 S. TROY

1954 SOUTH TROY AVENUE, CHICAGO, ILLINOIS 60647

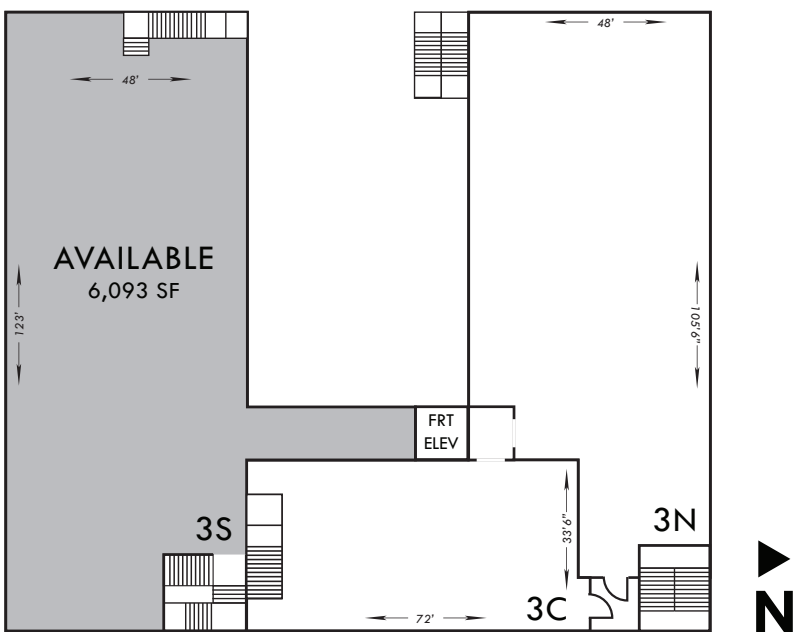
1ST FLOOR



2ND FLOOR



3RD FLOOR

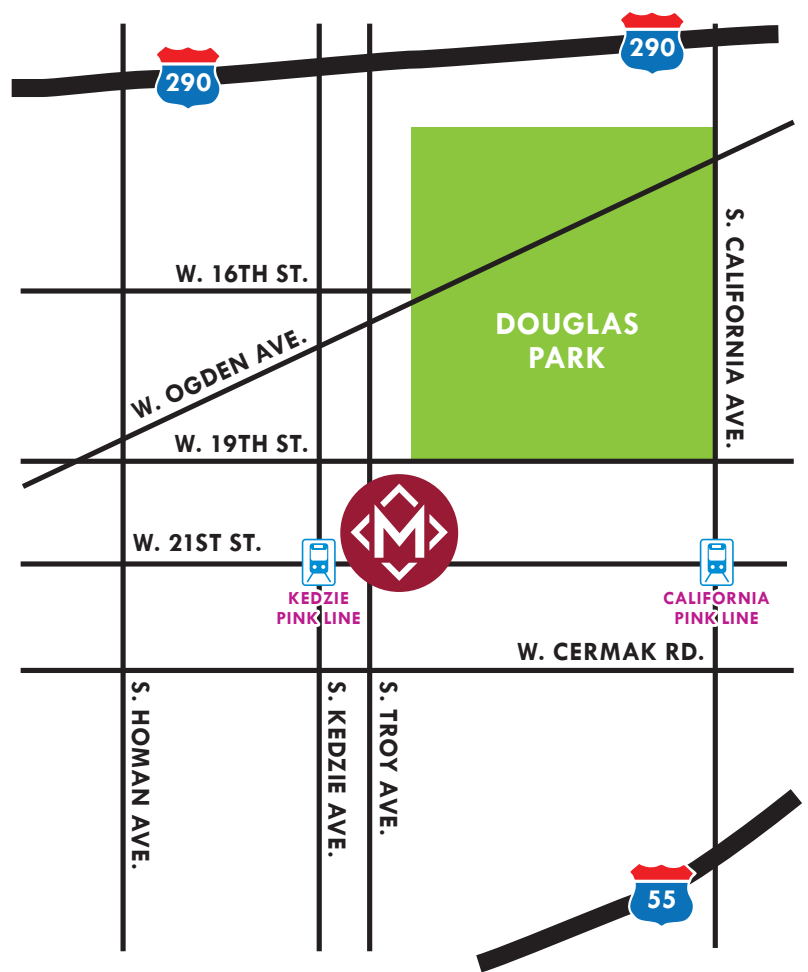


SITE PLAN

MAP



LOCATION



312-337-1001



TERRI COX

JOIN US ON:



MATANKY REALTY GROUP

WWW.MATANKY.COM