

1907 N. MENDELL

CHICAGO, IL 60642



**LOADING
DOCK &
FREIGHT
ELEVATOR**



FOR RENT | INDUSTRIAL

LIGHT INDUSTRIAL BUILDING IN LINCOLN PARK, RIGHT OFF THE CHICAGO RIVER. THIS FOUR STORY WALK-UP HAS INCREDIBLE NATURAL LIGHT AND VIEWS OF THE SKYLINE ALONG THE RIVER. A PLACE FOR CREATIVE MINDS: ARTISANS, PHOTOGRAPHERS, WOODWORKERS, AND MORE!

LOCATION | 1907 N. MENDELL ST. CHICAGO, IL 60642

SPACE AVAILABLE | 650 - 3,204 SF

LEASE RATE* | STARTS AS LOW AS \$1,000 / MONTH

ZONING | PMD-2

WALK SCORE | 76

*Available spaces only



CONTACT

TERRI COX

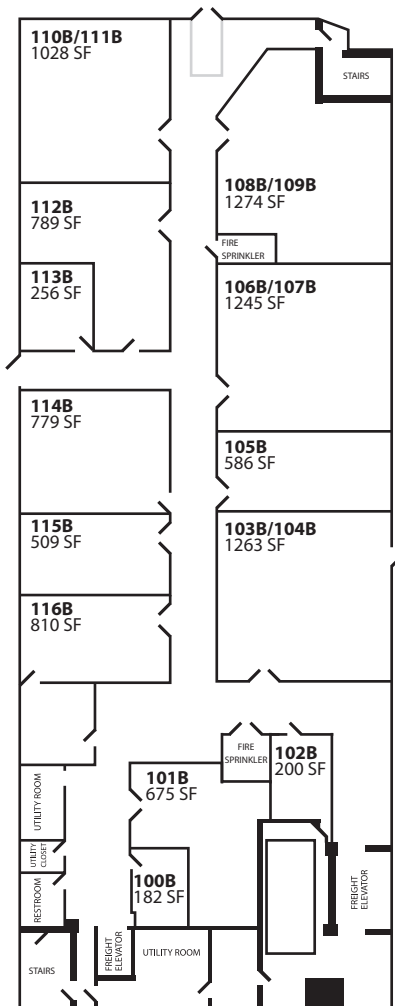
312-337-1001 xt. 2028
tcox@matanky.com

DON WAGENER

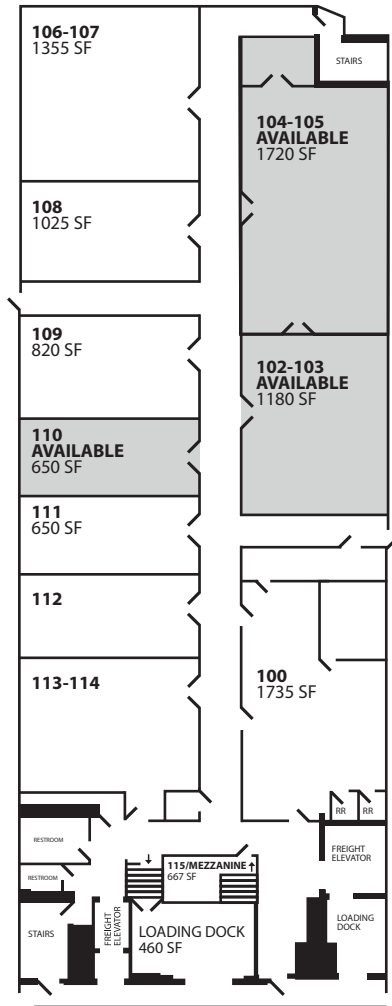
312-337-1001 xt. 2014
dwagener@matanky.com

1907 N. MENDELLE

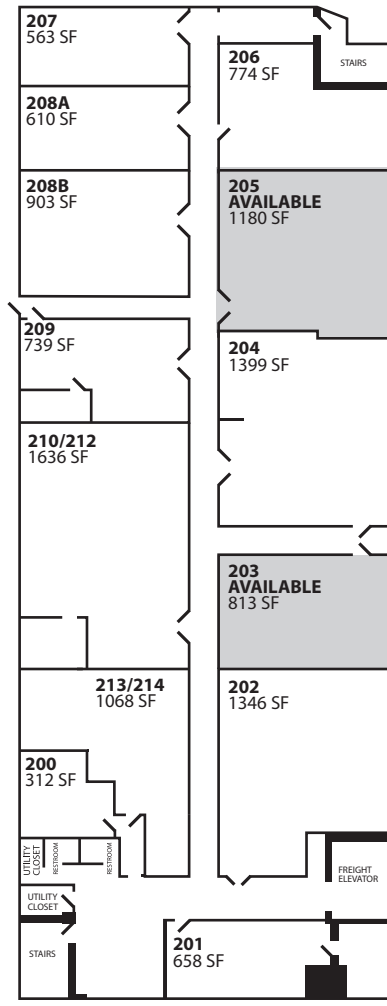
FLOOR PLAN



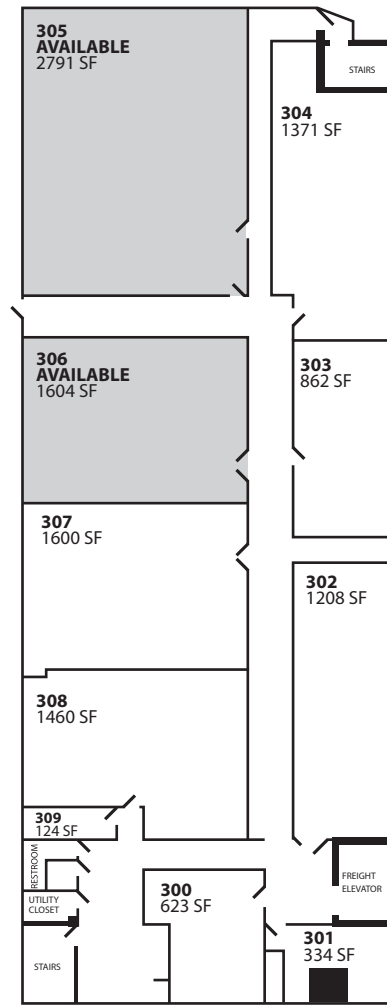
LOWER LEVEL



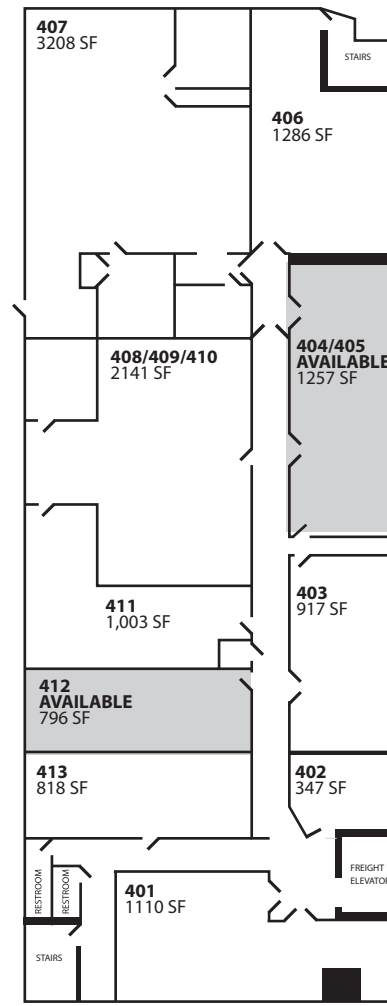
1ST FLOOR
MENDELLE ST.



2ND FLOOR



3RD FLOOR

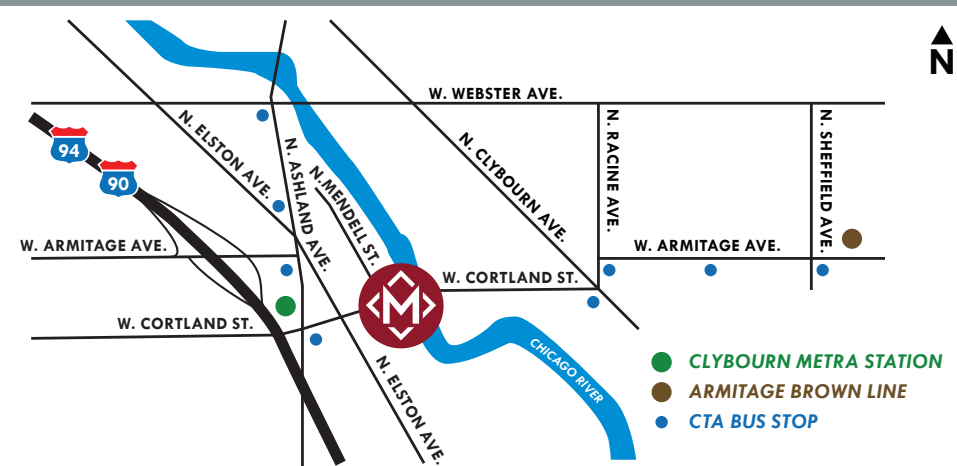


4TH FLOOR

MAP



LOCATION



CHICAGO, ILLINOIS 60622



312-337-1001



TERRI COX | DON WAGENER

JOIN US ON:



MATANKY REALTY GROUP

WWW.MATANKY.COM