

# 1907 N. MENDELL

CHICAGO, IL 60642



**LOADING  
DOCK &  
FREIGHT  
ELEVATOR**



**FOR RENT | INDUSTRIAL**

*LIGHT INDUSTRIAL BUILDING IN LINCOLN PARK, RIGHT OFF THE CHICAGO RIVER. THIS FOUR STORY WALK-UP HAS INCREDIBLE NATURAL LIGHT AND VIEWS OF THE SKYLINE ALONG THE RIVER. A PLACE FOR CREATIVE MINDS: ARTISANS, PHOTOGRAPHERS, WOODWORKERS, AND MORE!*

**LOCATION |** 1907 N. MENDELL ST. CHICAGO, IL 60642

**SPACE AVAILABLE |** 650 - 3,204 SF

**LEASE RATE\* |** STARTS AS LOW AS \$1,000 / MONTH

**ZONING |** PMD-2

**WALK SCORE |** 76

\*Available spaces only



CONTACT

**TERRI COX**

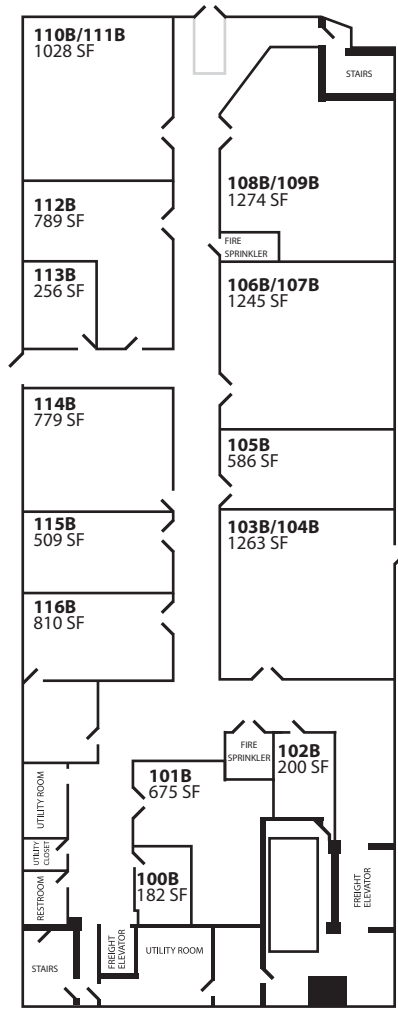
312-337-1001 xt. 2028  
tcox@matanky.com

**DON WAGENER**

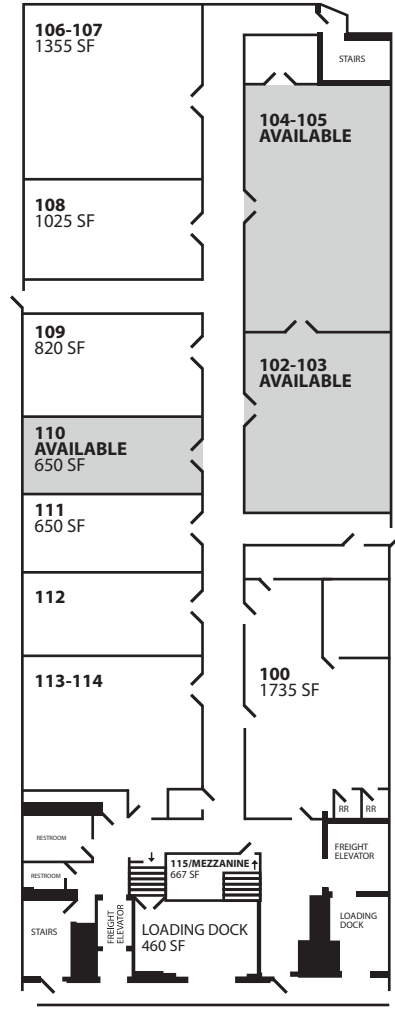
312-337-1001 xt. 2014  
dwagener@matanky.com

# 1907 N. MENDELLE

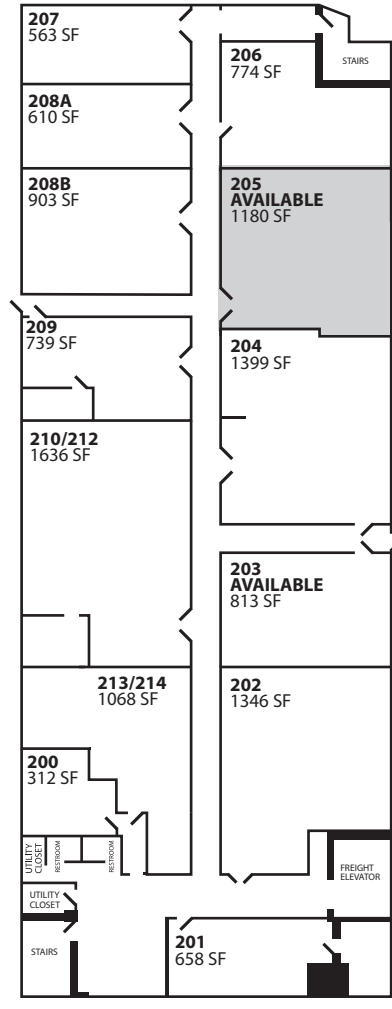
## FLOOR PLAN



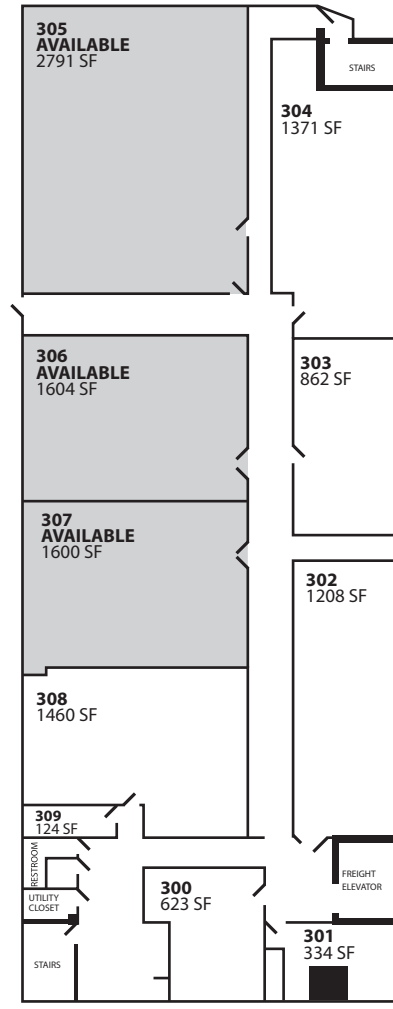
LOWER LEVEL



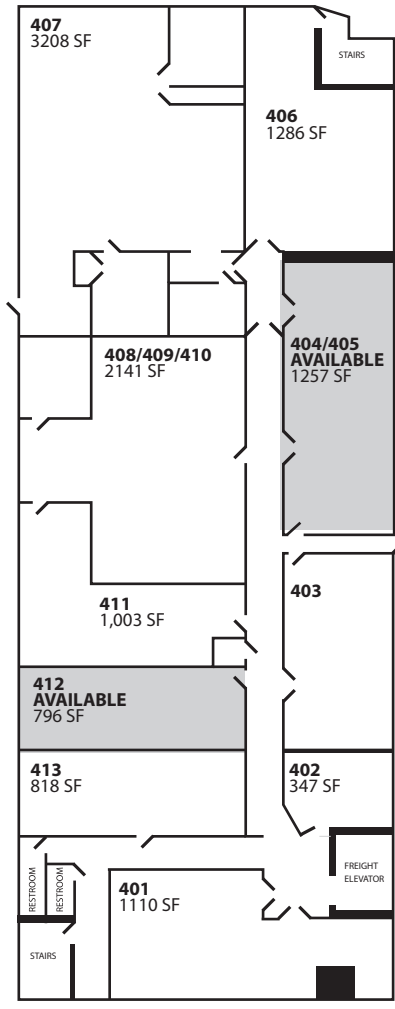
1ST FLOOR  
MENDELLE ST.



2ND FLOOR



3RD FLOOR

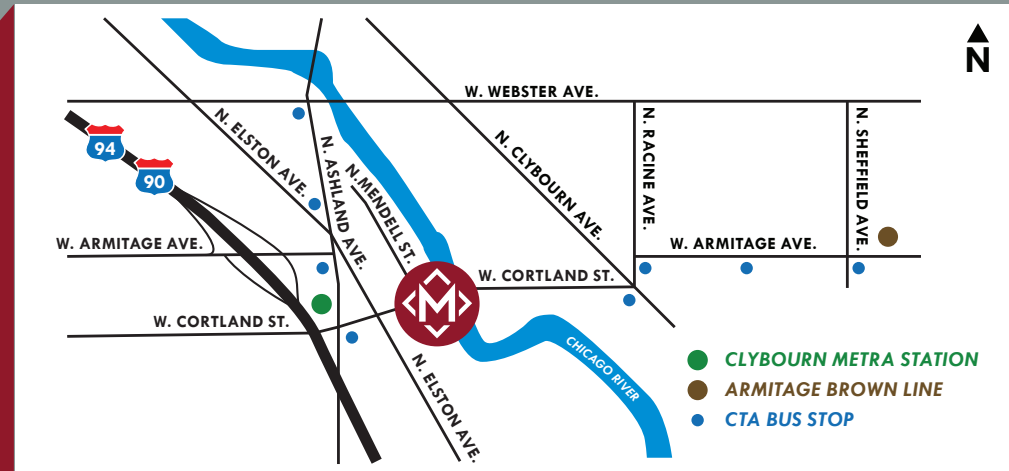


4TH FLOOR

## MAP



## LOCATION



CHICAGO, ILLINOIS 60622



312-337-1001



TERRI COX | DON WAGENER

JOIN US ON:



MATANKY REALTY GROUP

WWW.MATANKY.COM