



# SUNNYSIDE PLAZA

1820 - 1902 W. COURT ST. JANESVILLE, WI 53548

**ONE  
SPACE  
LEFT!**



**FOR RENT | RETAIL**

ONE SPACE LEFT WITH 2 ADA RESTROOMS AND DROP DOWN CEILINGS—SAVE BUILD OUT COSTS! LOCATED AT A CVS AND FAMILY DOLLAR CO-ANCHORED PLAZA ON WEST COURT STREET AMONG SOME OF JANESVILLE'S NEWEST RETAIL DEVELOPMENT. AMPLE PARKING FOR YOUR CUSTOMERS AND GREAT VISIBILITY FOR YOUR BUSINESS!

- SPACE AVAILABLE** | 2,100 - 15,570 SF
- ANNUAL NET RENT\*** | \$4 - \$8 / SF
- CAM & TAX** | \$2.69 / SF
- POPULATION** | 65,000+ WITHIN 5 MILES
- AVERAGE HH INCOME** | \$60,000+ WITHIN 5 MILES
- TRAFFIC** | 15,000 VEHICLES PER DAY

\*Available spaces only

TENANTS  
INCLUDE



CONTACT

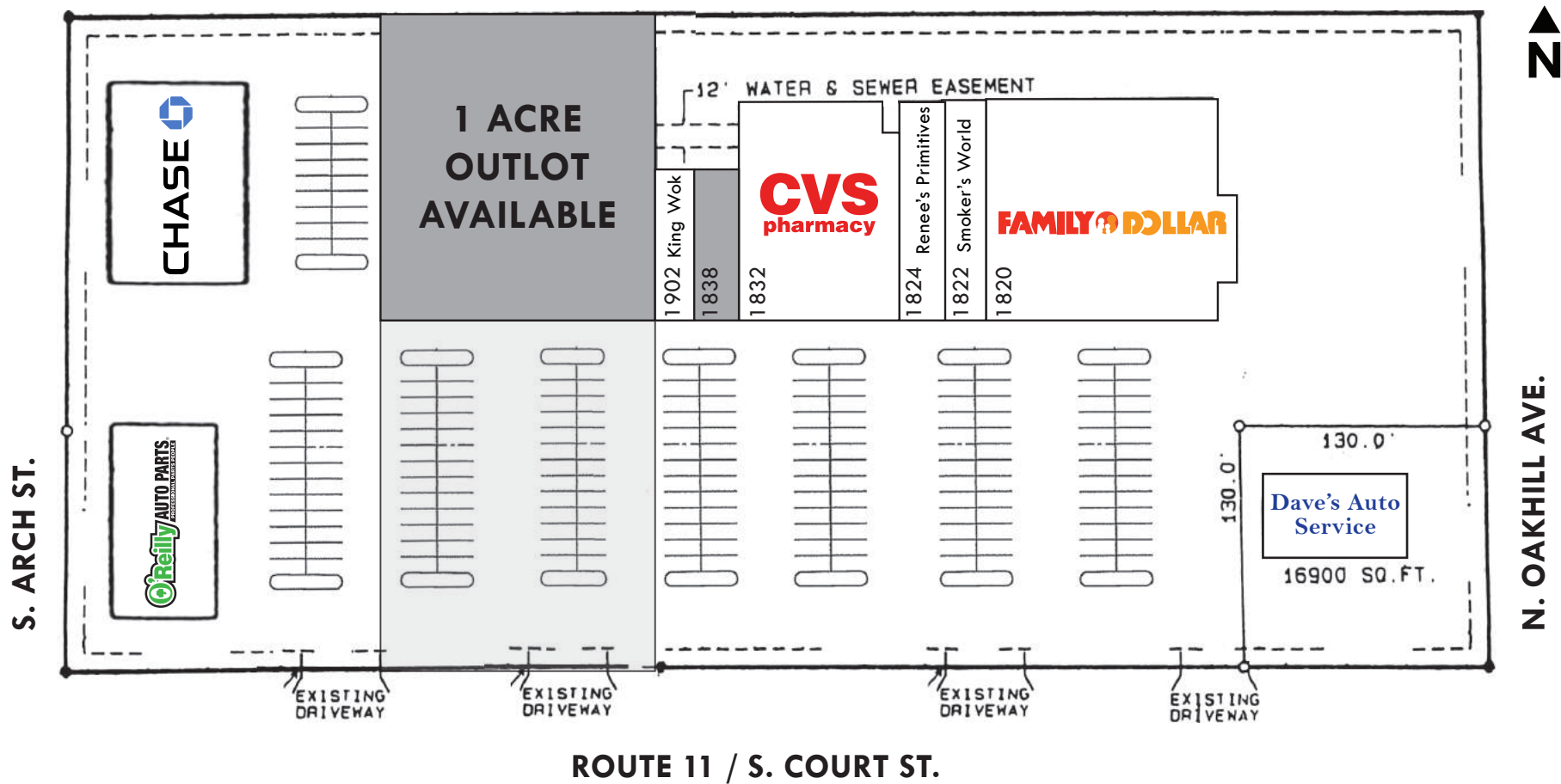
**JAMES MATANKY**  
312-337-1001 ext. 2015  
jmatanky@matanky.com

**ARNIE BLAKE**  
312-337-1001 ext. 2030  
ablake@matanky.com

# SUNNYSIDE PLAZA

1820 - 1902 WEST COURT STREET, JANESVILLE, WISCONSIN 53548

SITE PLAN



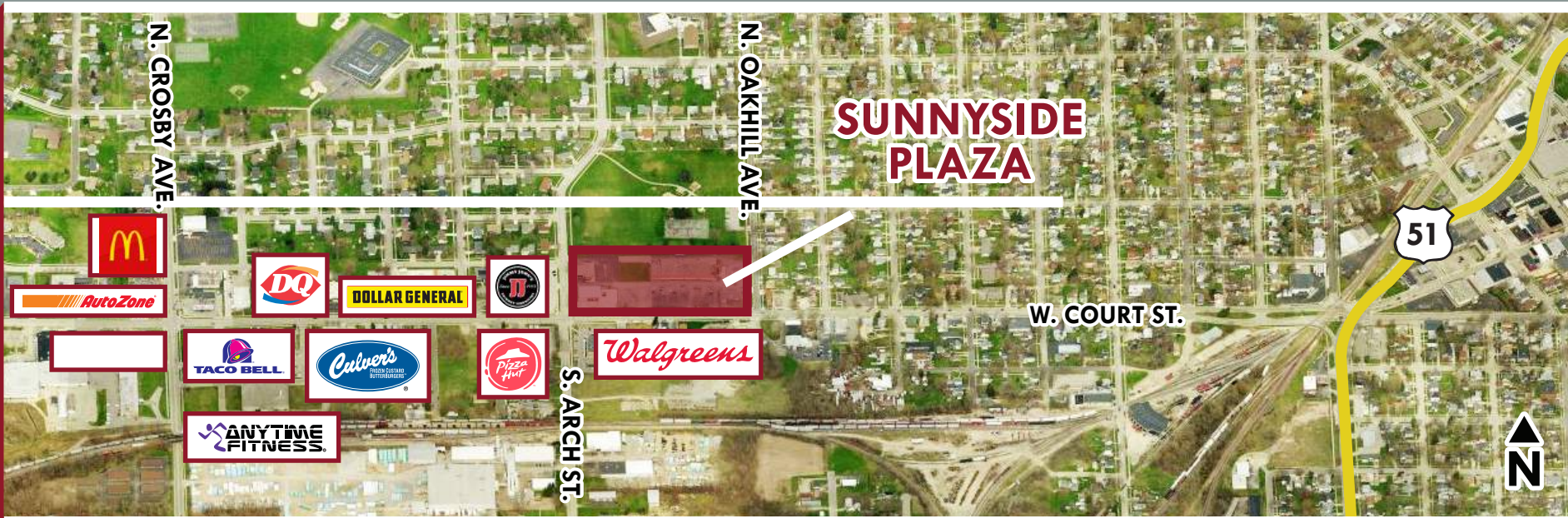
MAP



TENANTS

#	SF	TENANT
1820	12,428	Family Dollar
1822	2,415	Smoker's World
1824	3,702	Renee's Primitives
1832	9,768	CVS
<b>1838</b>	<b>2,100</b>	<b>AVAILABLE</b>
1902	1,600	King Wok

AERIAL



312-337-1001

JAMES MATANKY | ARNIE BLAKE

JOIN US ON:



**MATANKY** REALTY GROUP

WWW.MATANKY.COM