



63RD & ST. LOUIS

3501-17 W. 63RD ST., CHICAGO, IL 60629



FOR RENT | *RETAIL*

BRAND NEW, 2-STORY STORE-FRONT RETAIL AND OFFICE BUILDING. SLEEK DESIGN AND PRIME LOCATION FOR ANY BUSINESS. LESS THAN 3 MILES FROM MIDWAY INTERNATIONAL AIRPORT AND THE BEAUTIFUL MARQUETTE PARK. AMPLE PARKING BEHIND BUILDING.

SPACE AVAILABLE | 1,775 - 3,915 SF

ANNUAL NET RENT* | \$15 - \$17 / SF

ANNUAL CAM & TAX | \$5.00 / SF

DAYTIME POPULATION | 6,000 WITHIN 1 MILE

POPULATION | 60,000+ WITHIN 1 MILE

AVERAGE HH INCOME | \$50,000+ WITHIN 1 MILE

TRAFFIC | 15,000+ VEHICLES PER DAY

**Available spaces only*



CONTACT

TERRI COX

312-337-1001 xt. 2028
tcox@matanky.com

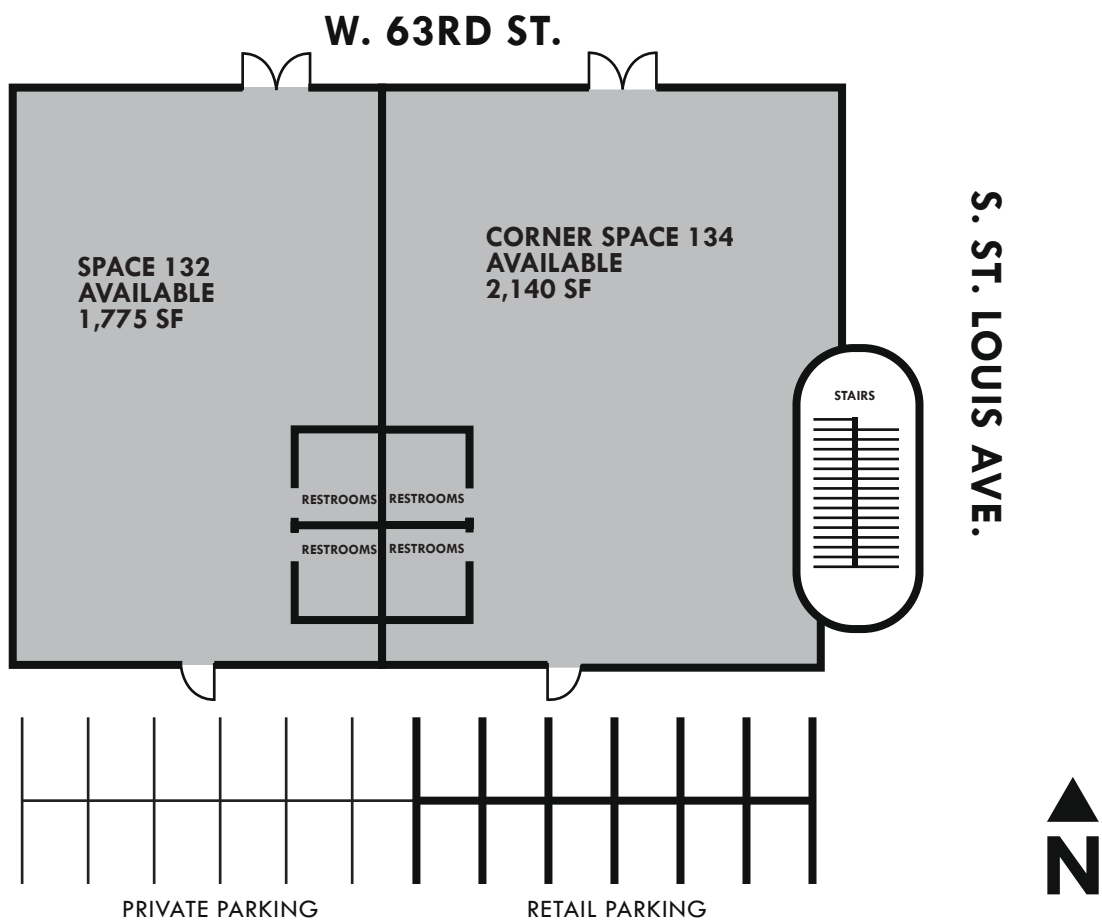
ZACH SLAGLE

312-337-1001 xt. 2027
zslagle@matanky.com

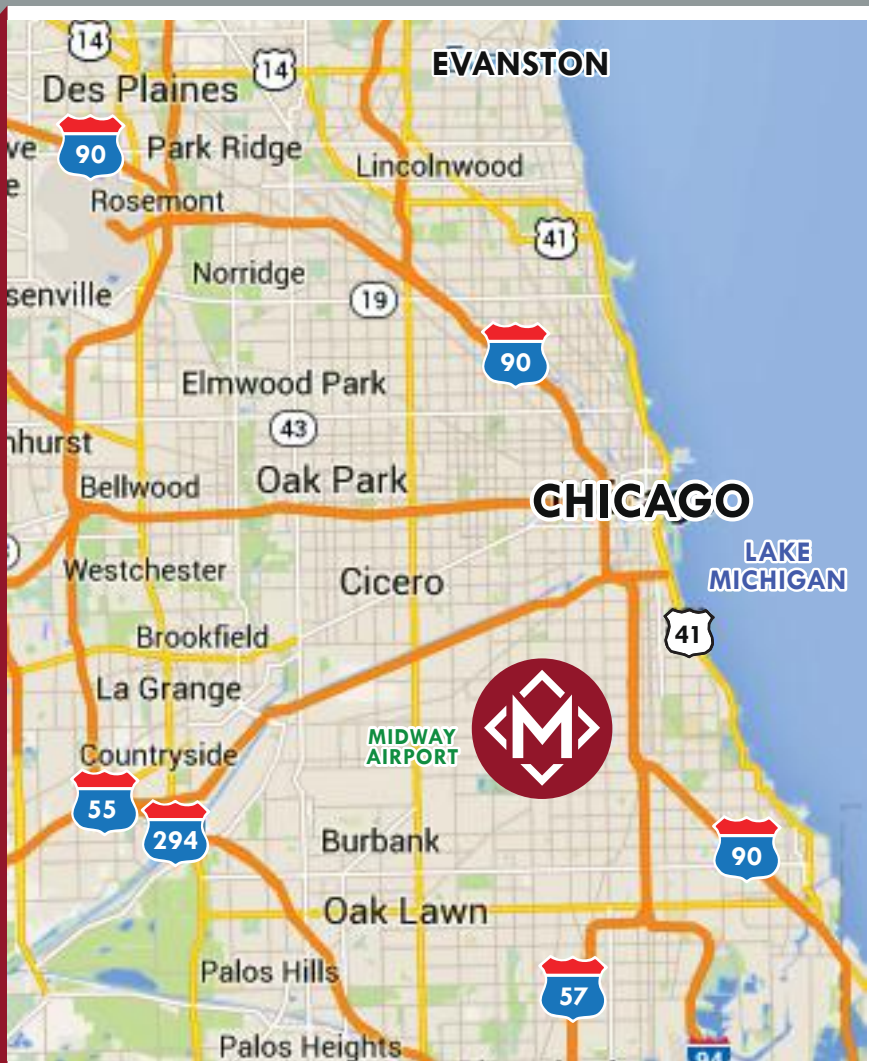
63RD & ST. LOUIS

3501-17 W. 63RD ST., CHICAGO, IL 60629

SITE PLAN



MAP



AERIAL



 **312-337-1001**  **TERRI COX | ZACH SLAGLE**

JOIN US ON:



MATANKY REALTY GROUP

WWW.MATANKY.COM