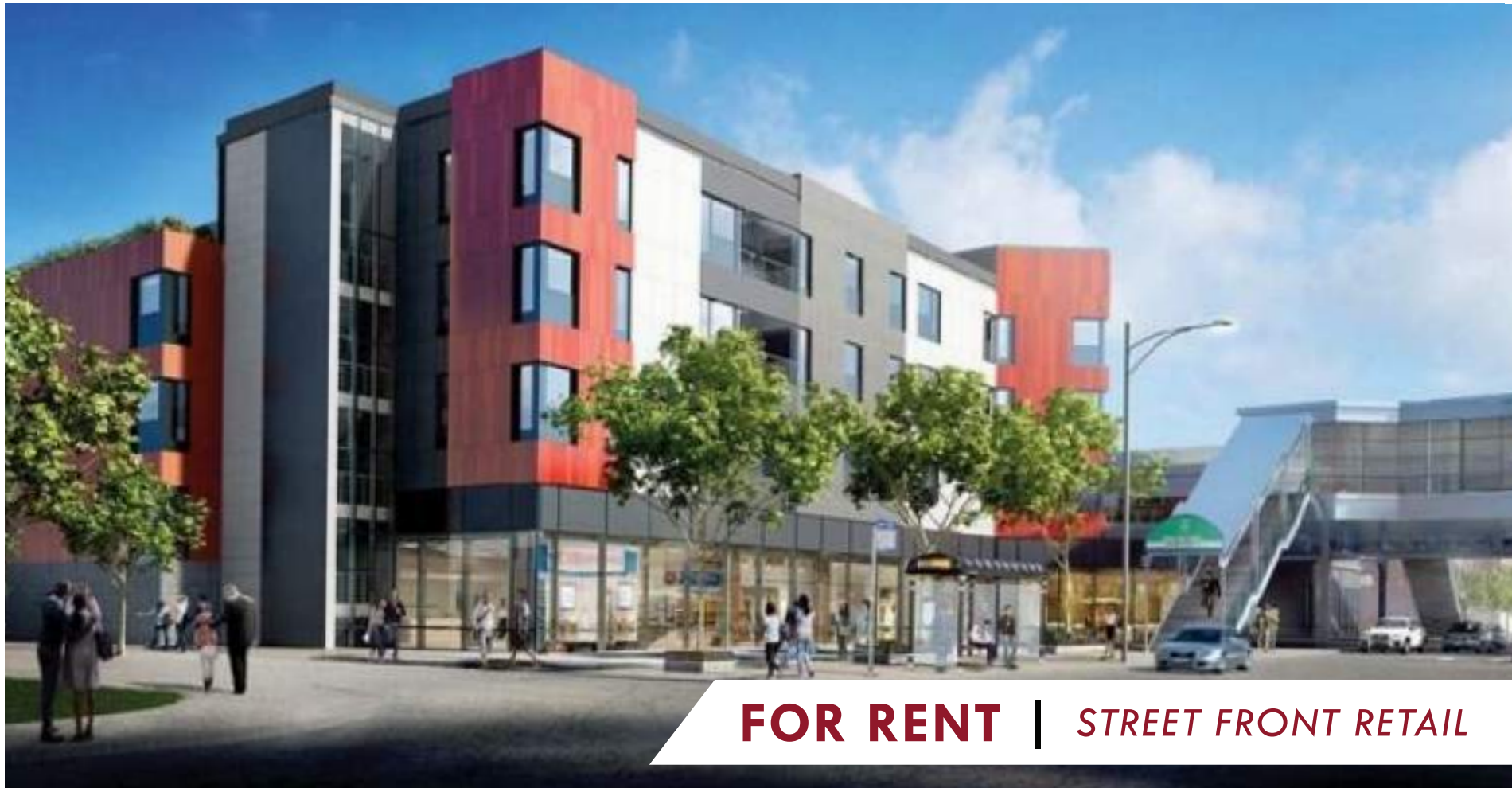




WOODLAWN STATION

6253 S. COTTAGE GROVE AVE., CHICAGO, IL 60637



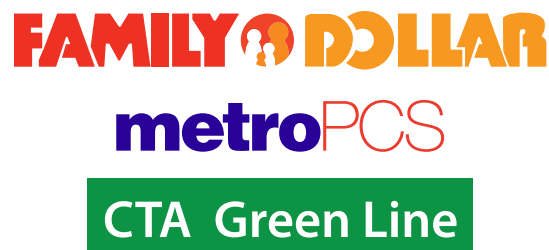
FOR RENT | STREET FRONT RETAIL

FIRST FLOOR RETAIL AVAILABLE IN A NEW 4 STORY MULTI-FAMILY RESIDENTIAL BUILDING! LOCATED AT THE ENTRANCE OF THE CTA GREEN LINE STATION AND THE NORTHEAST CORNER OF 63RD & COTTAGE GROVE. CONSTRUCTION TO BEGIN 2017.

- SPACE AVAILABLE** | 1,200 - 14,722 SF
- ANNUAL LEASE RATE** | \$22 - \$27 / SF
- POPULATION** | 142,000+ WITHIN 2 MILES
- AVERAGE HH INCOME** | \$52,000 WITHIN 2 MILES
- TRAFFIC** | 19,000+ VEHICLES PER DAY
- WALK SCORE** | 83



SURROUNDING



CONTACT

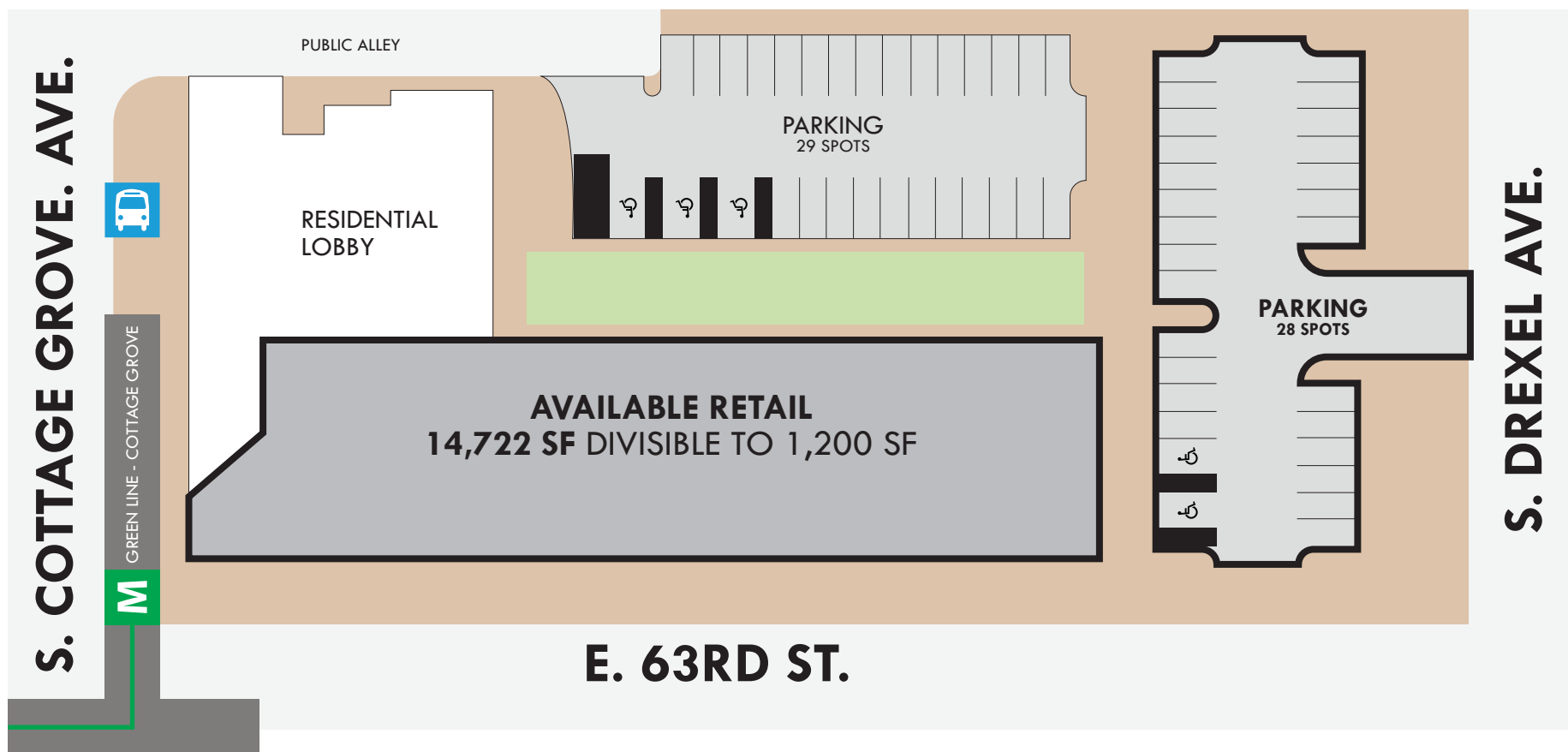
JAMES E. MATANKY
312-337-1001 xt. 2015
jmatanky@matanky.com

SCOTT LEVINSON
312-337-1001 xt. 2022
slevinson@matanky.com

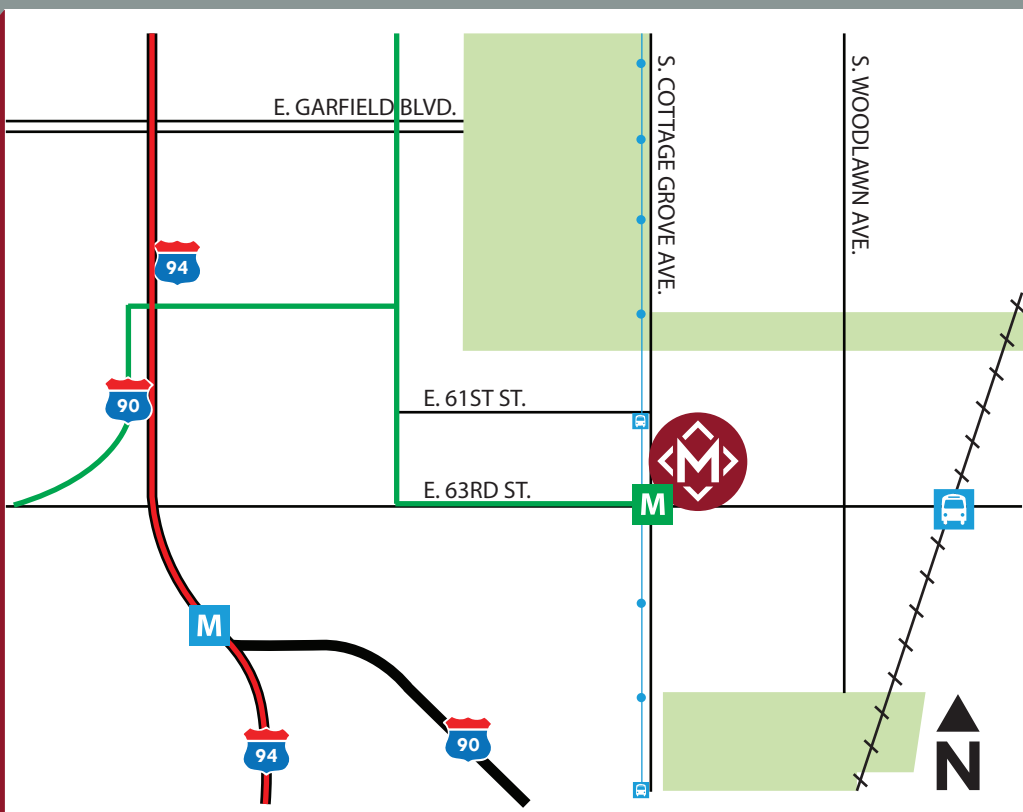
WOODLAWN STATION

6253 S. COTTAGE GROVE AVE., CHICAGO, IL 60637

SITE PLAN



AERIAL



MAP



 312-337-1001  JAMES E. MATANKY | SCOTT LEVINSON

JOIN US ON:



MATANKY REALTY GROUP

WWW.MATANKY.COM