



SEC OF 62ND & COTTAGE GROVE SITE

6251 S. COTTAGE GROVE AVE., CHICAGO, IL 60637



FOR SALE OR GROUND LEASE | DEVELOPMENT SITE

RARE VACANT DEVELOPMENT SITE! WOODLAWN NEIGHBORHOOD'S LARGE-SCALE REDEVELOPMENT CONTINUES IN DRAMATIC FASHION! ACROSS THE STREET FROM THE UNIVERSITY OF CHICAGO CAMPUS, 2 BLOCKS FROM U. OF C. MEDICAL CENTER, ON THE CTA BUS LINE, AND A BLOCK FROM CTA GREEN LINE TRAIN COTTAGE GROVE STATION.

LOT SIZE | ~18,688 SF

SALE PRICE | \$850,000

ZONING | PD 64

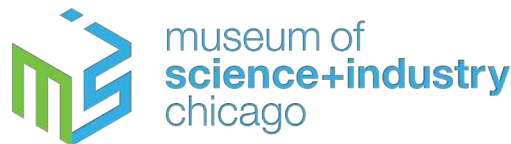
POPULATION | 142,000+ WITHIN 2 MILES

AVERAGE HH INCOME | \$53,000 WITHIN 2 MILES

TRAFFIC | 19,100 VEHICLES PER DAY

WALK SCORE | 83

SURROUNDING



CTA Green Line



CONTACT

JAMES E. MATANKY

312-337-1001 xt. 2015
jmatanky@matanky.com

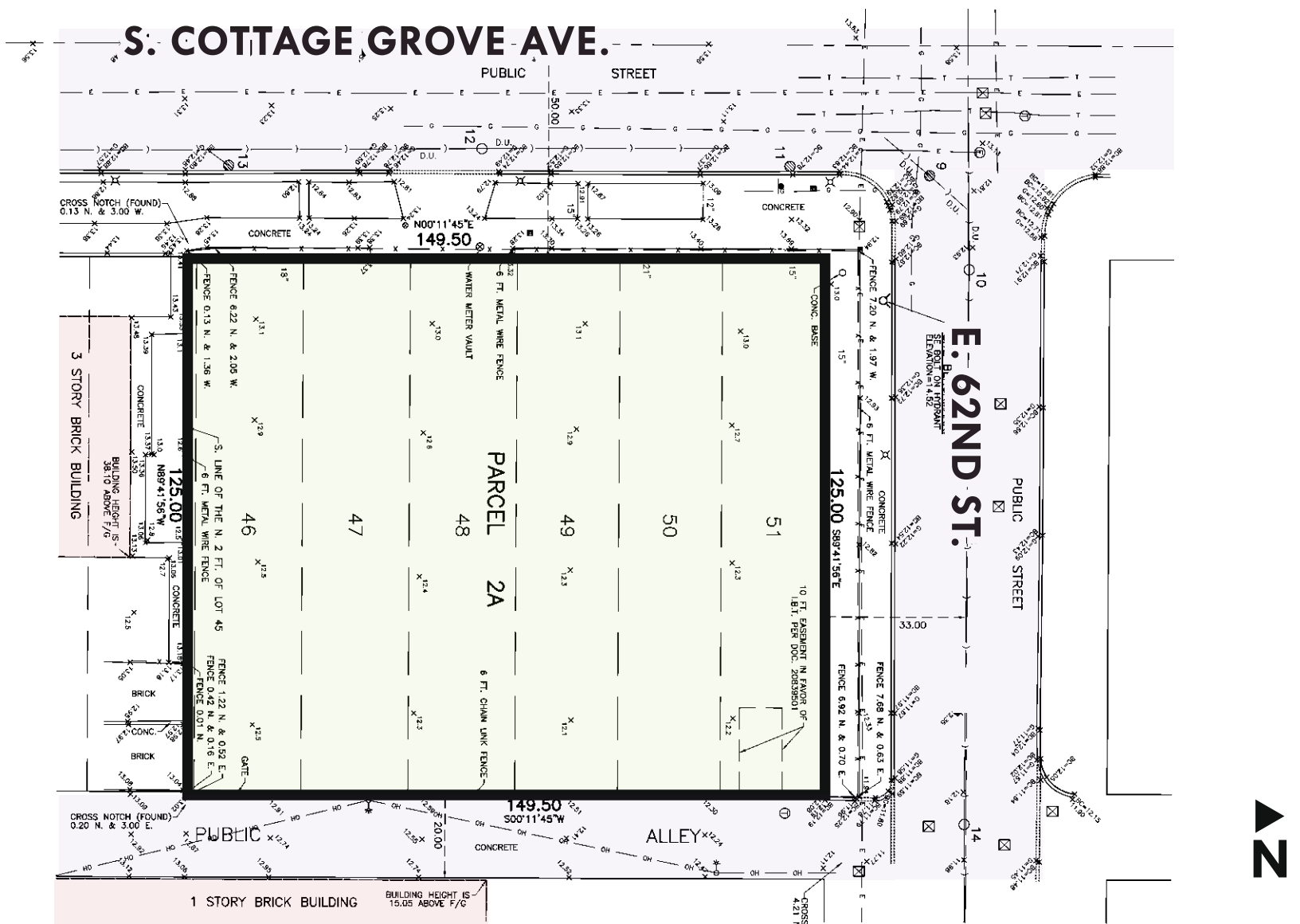
SCOTT LEVINSON

312-337-1001 xt. 2022
slevinson@matanky.com

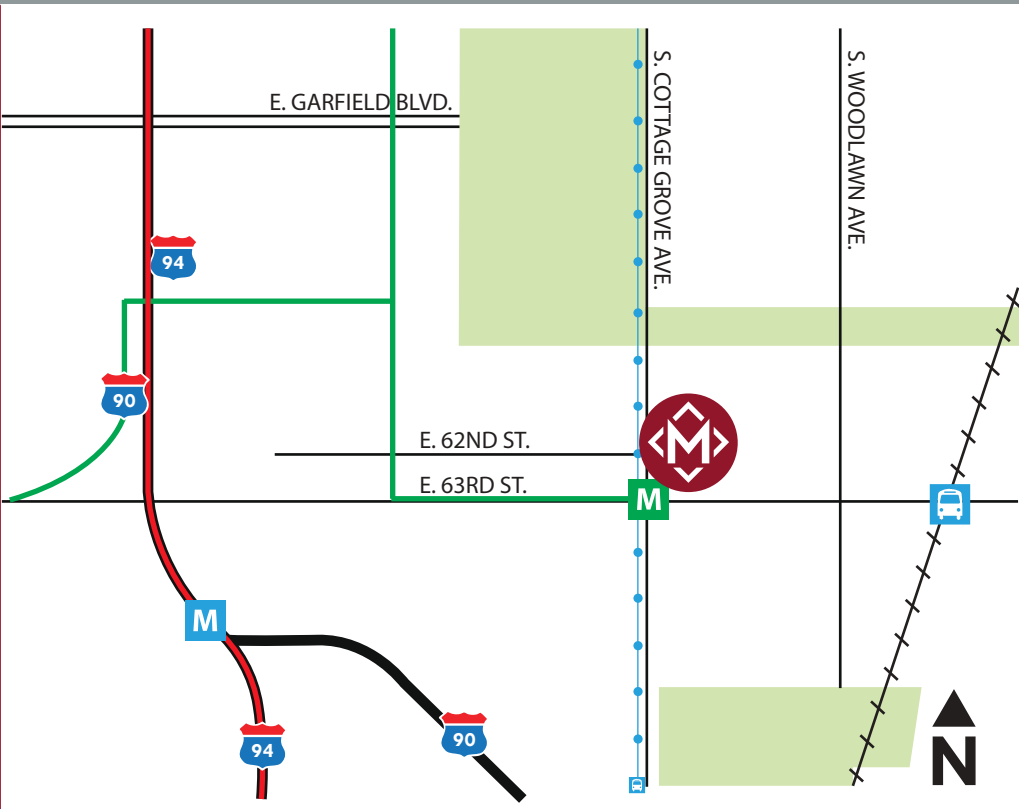
SEC 62ND & COTTAGE GROVE SITE

6251 S. COTTAGE GROVE AVE., CHICAGO, IL 60637

SITE PLAN



AERIAL



MAP



312-337-1001 | JAMES E. MATANKY | SCOTT LEVINSON

JOIN US ON:



WWW.MATANKY.COM