

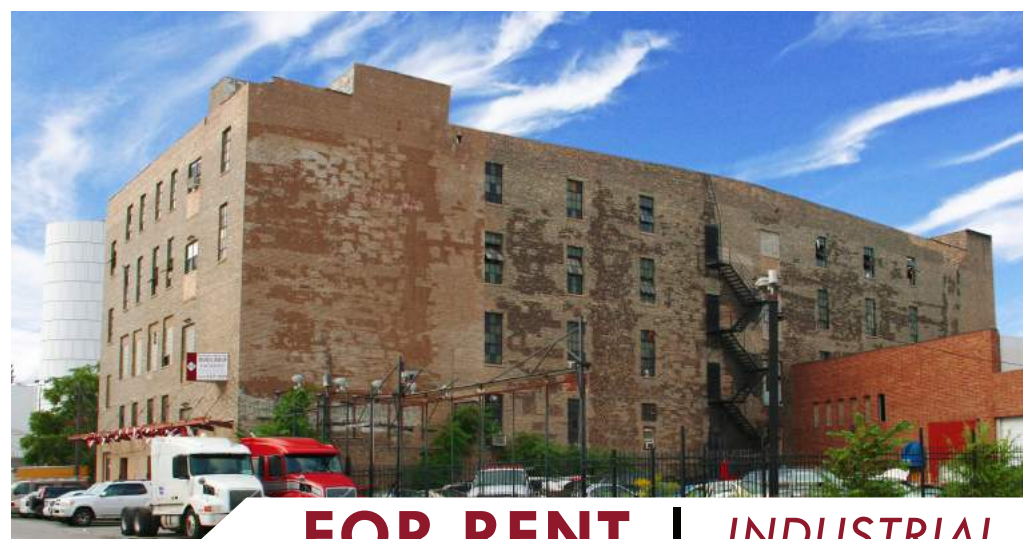


# 1907 N. MENDELL

CHICAGO, IL 60642



**LOADING  
DOCK &  
FREIGHT  
ELEVATOR**



**FOR RENT | INDUSTRIAL**

LIGHT INDUSTRIAL BUILDING IN LINCOLN PARK, RIGHT OFF THE CHICAGO RIVER. THIS FOUR STORY WALK-UP HAS INCREDIBLE NATURAL LIGHT AND VIEWS OF THE SKYLINE ALONG THE RIVER. A PLACE FOR CREATIVE MINDS: ARTISANS, PHOTOGRAPHERS, WOODWORKERS, AND MORE!

**LOCATION | 1907 N. MENDELL ST. CHICAGO, IL 60642**

**SPACE AVAILABLE | 796 - 3,200 SF**

**LEASE RATE\* | STARTS AS LOW AS \$1,150 / MONTH**

**ZONING | PMD-2**

\*Available spaces only



CONTACT

**TERRI COX**

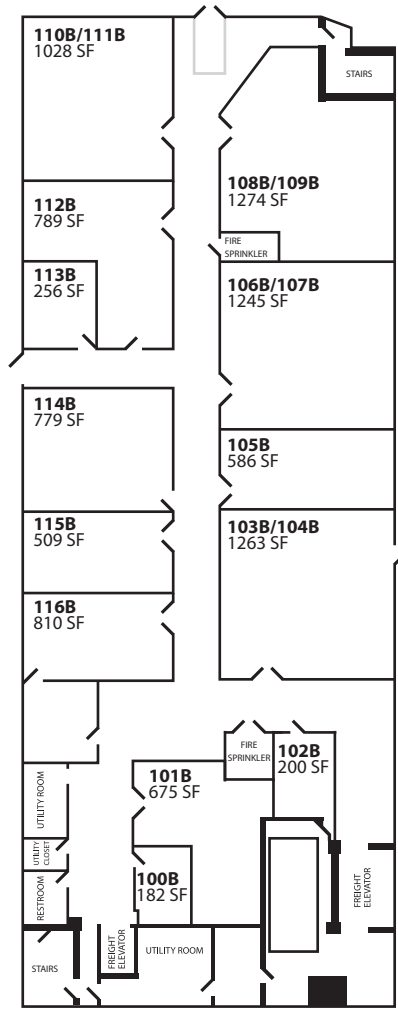
312-337-1001 xt. 2028  
tcox@matanky.com

**DON WAGENER**

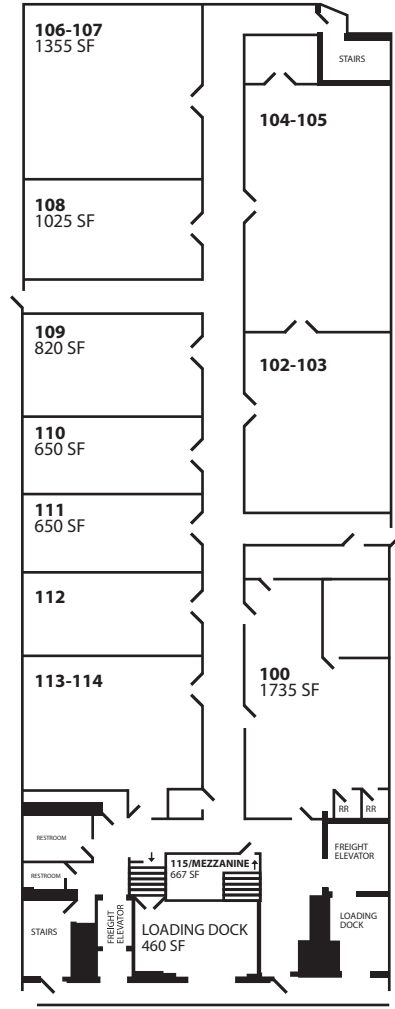
312-337-1001 xt. 2014  
dwagener@matanky.com

# 1907 N. MENDELL

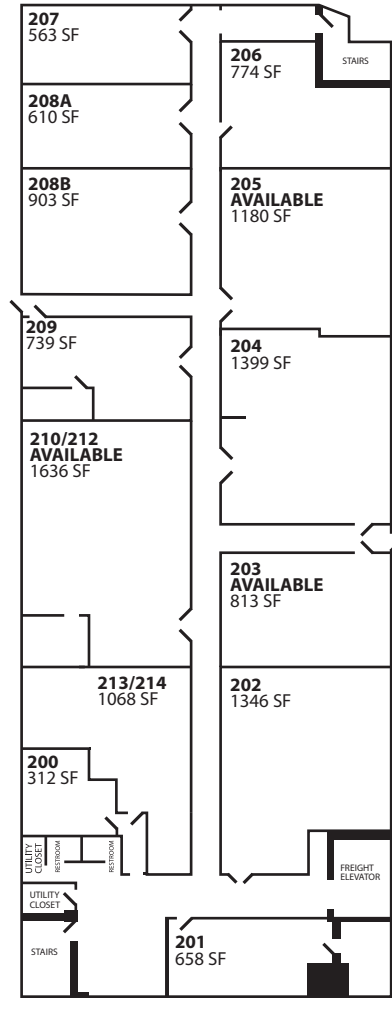
## FLOOR PLAN



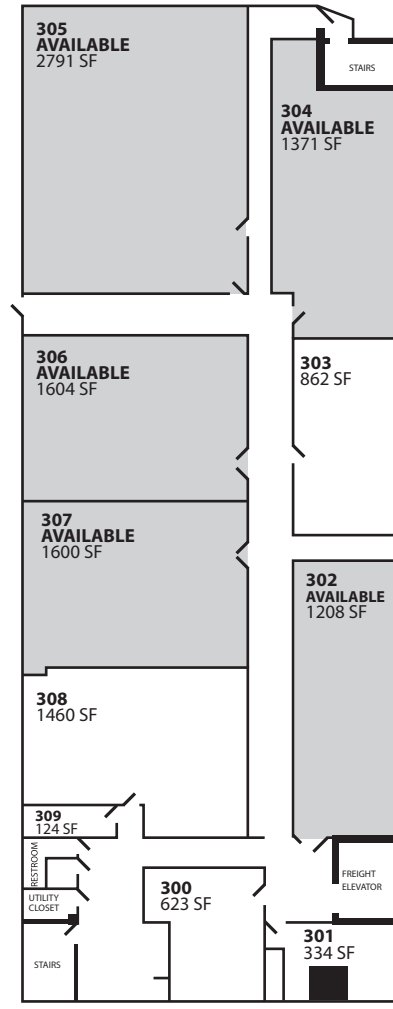
LOWER LEVEL



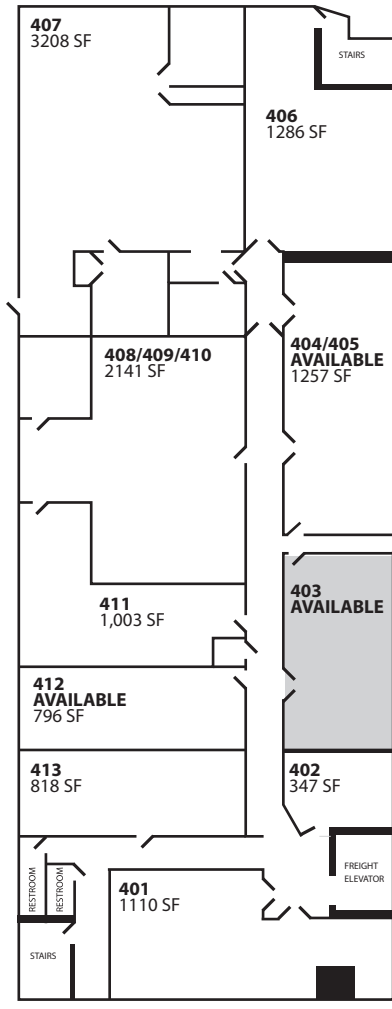
1ST FLOOR  
MENDELL ST.



2ND FLOOR



3RD FLOOR

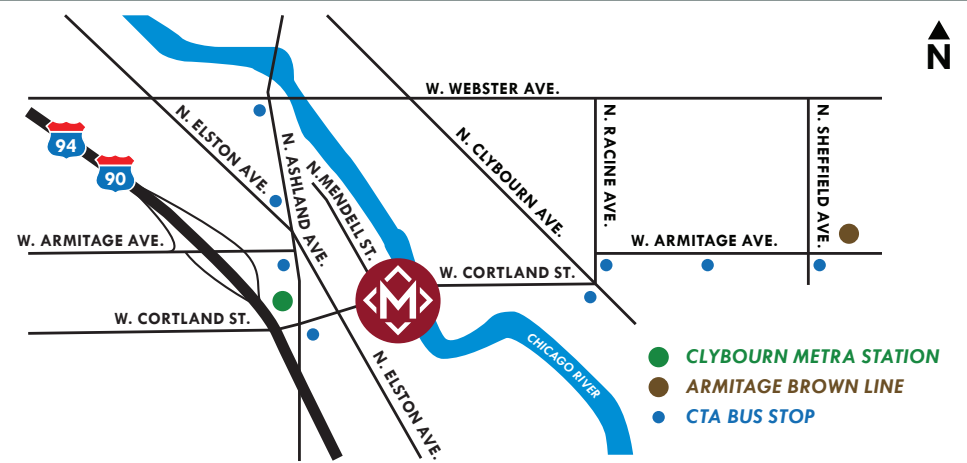


4TH FLOOR

## MAP



## LOCATION



CHICAGO, ILLINOIS 60622



312-337-1001



TERRI COX | DON WAGENER

JOIN US ON:



MATANKY REALTY GROUP

WWW.MATANKY.COM